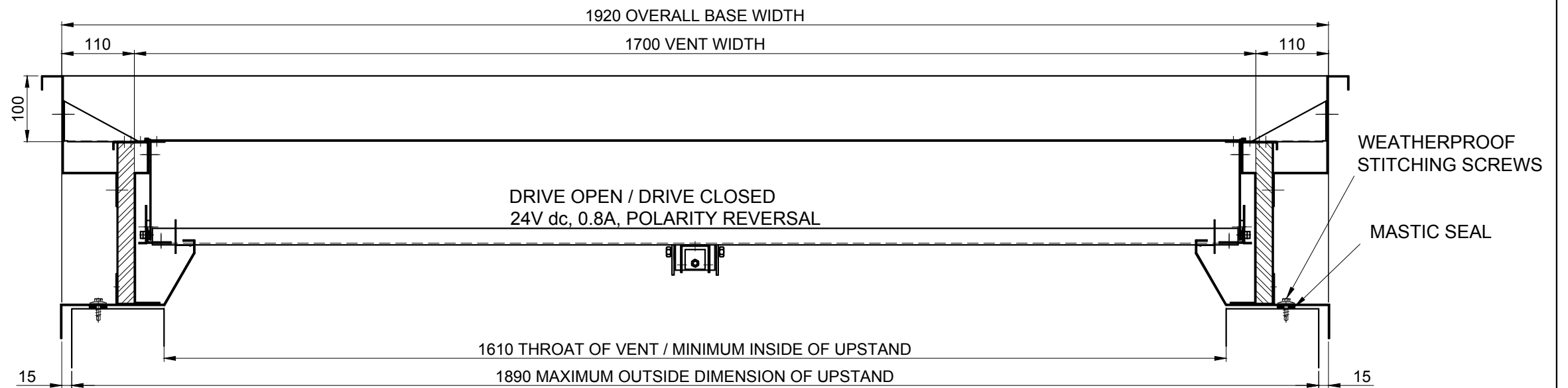
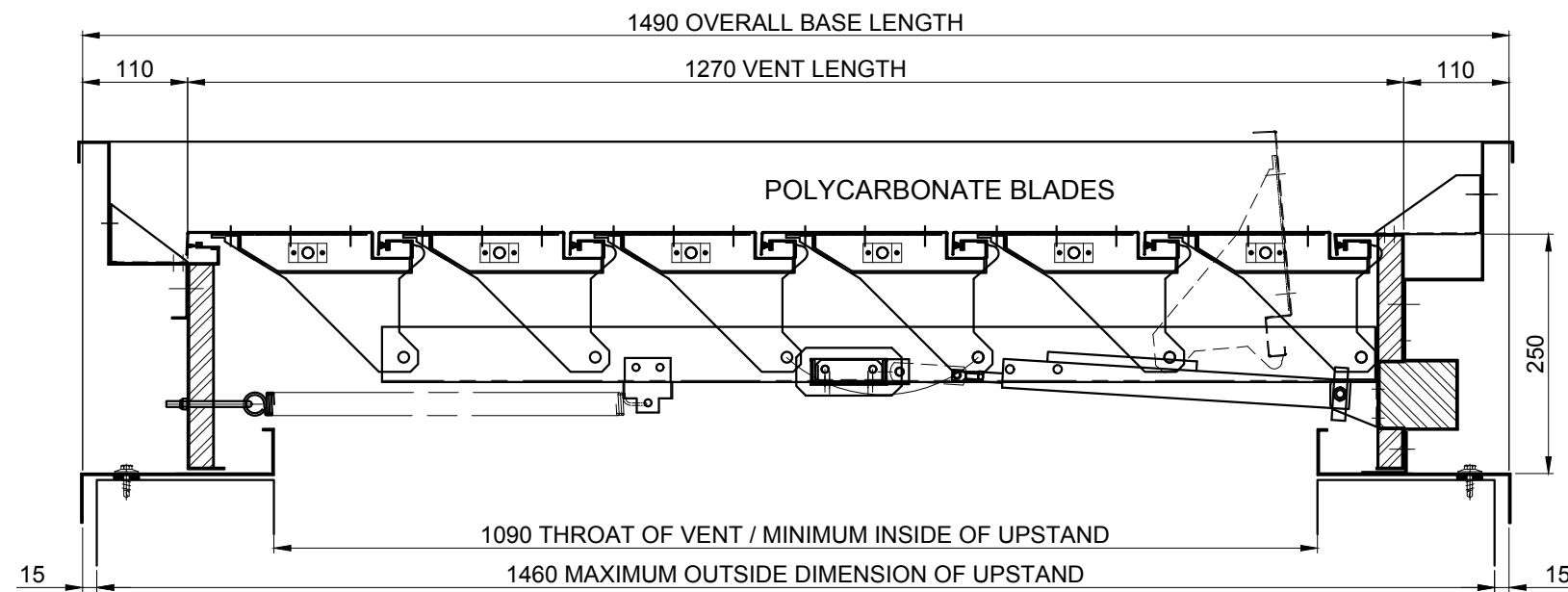
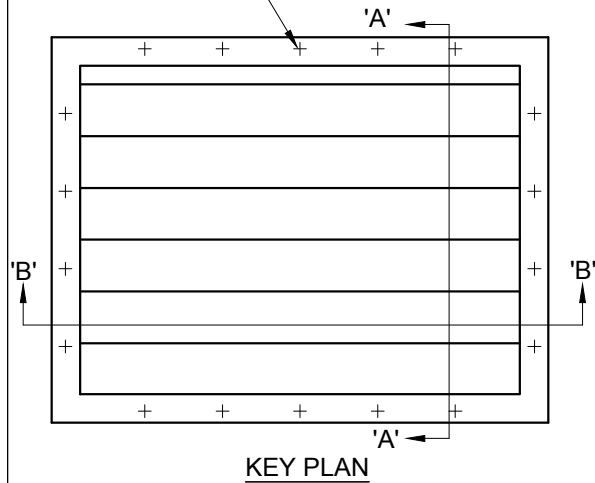


FOR ANY SLOPE ON UPSTAND, HEAD
MUST BE POSITIONED UPSLOPE

PLACE VENT BASE ON TO
CONTINUOUS MASTIC BEAD
& FIX WITH BUILDEX N°12 x 25
LONG STITCHING SCREWS
@ APPROX 300 CENTRES



ROOF OPEN SKY VENT, OSREN0617/T/Q/PC/IA
DRIVE OPEN / DRIVE CLOSED
24V dc, 0.8A, POLARITY REVERSAL
THIS VENT HAS BEEN TESTED TO BS EN 12101 Pt 2
INSULATED ALUMINIUM BODY
POLYCARBONATE BLADES
FREE AREA = 1.75m²
AERODYNAMIC FREE AREA = 1.23m² (tested using windshields)
FREE AREA to Approved Document B = 1.51m²
APPROX. WEIGHT 38.5kg

ITEM	PART NUMBER	DESCRIPTION	QTY	MATERIAL GAUGE AND SPEC
1.	-	-	-	-

AS - - 27/10/16				NEW DRAWING		APPROVED BY:		TITLE:	
DRN	I/A No	DCR	DATE	MODIFICATIONS	ISSUE	PROJECTION: UNITS: MM		POWRMATIC ROOF OPEN SKY OVERALL DETAILS	
						UNSPEC. TOLS. Hole centers ±0.25mm General ±0.5mm Finished sizes ±1.0mm		DRG NO: OSREN0617/T/Q/PC/IA	
						DO NOT SCALE			