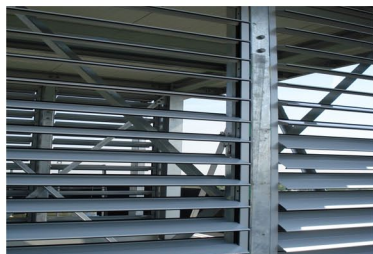




## Information about louvre window S200



## S 200

The S 200 is an economical solution for industrial use as a supply air system, which is also designed to serve as a shading or privacy screening system. The frame is made of extruded aluminium profiles with a frame construction depth of 50 mm and a frame face width of 38 mm. The S200 is approved as a smoke and heat extraction system according to DIN EN 12101-2:2003.

### Louvre blades:

Slats are made of extruded aluminium profiles with a height of 200 mm. The S-shaped slat profile allows a variant centre distance of 120 to 180 mm. Thus, the frame height can be adjusted to requirements.

### Technical specification tested as per DIN EN 12101-2:2003:

- Aerodynamic:  $C_v = 0.55 - 0.57$  (opening angle  $78^\circ$ )\*
- Structural stability under wind load WL 3000

\* subject to model and size.

Further technical data on page 2.

### Possible Sizes:

Minimum frame width = 300 mm

Maximum frame width = 1800 mm

(broader elements are available divided by glazing bars)

[Link to S200 cross section](#)

