

Technical Data Sheet –

Shaft Natural Damper – Residential (SND-R)



Shaft Natural Damper – Residential (SND-R), are multi-zone smoke control dampers and designed for use in natural smoke ventilation systems. They are typically installed into smoke control ducts to provide extract ventilation to corridors and lobbies in residential and commercial buildings.

Specific Features

- Certified to BS EN 12101-8:2011
- Classified to EN 13501-4:2016
- Tested to EN 1366-2 and EN 1366-10
- Fire resistance class EIS 120
- Suitable for smoke control in multi-zone smoke ventilation systems
- May be used for environmental ventilation
- Available up to 1.20m² maximum geometric area
- Manufactured with steel fire protected housing for installation directly into smoke shaft apertures
- Hinged white linear grill internally provides a neat finish whilst enabling quick access for commissioning and service
- Remote signalling of both open and closed positions

Product Description

Shaft Natural Damper – Residential (SND-R), are multi-zone smoke control dampers and designed for use in natural smoke ventilation systems. They are typically installed into shafts to provide extract ventilation to corridors and into smoke control ducts in residential and commercial buildings.

They are certified to BS EN 12101-8:2011 and have a fire resistance class of EIS 120. They may be used in multi-compartmented smoke control ducts and have an integrity and insulation of 120 minutes. In addition they have been tested for reliability up to 10,000 cycles and may be used for environmental ventilation.

They are manufactured with a steel casing, and fire rated multi-blade louvres and operate by a drive open/drive close 24V AC/DC Belimo actuator. They are supplied with a hinged white linear grill internally which provides a neat finish whilst enabling quick access for commissioning and service.

Technical Data Sheet –

Shaft Natural Damper – Residential (SND-R)

Classification according to BS EN 12101-8

Maximum size Width X Height (mm)	969 x 2041
Response time/closure time	30s/60s
Operational reliability	10,000
Fire resistance – integrity	E120
Fire resistance – insulation	I120
Smoke Leakage – 500PA	S500
Activation	AA
Multi Compartment	Multi
Mounting Position	VEW
Testing Position	i↔0

Actuator technical data

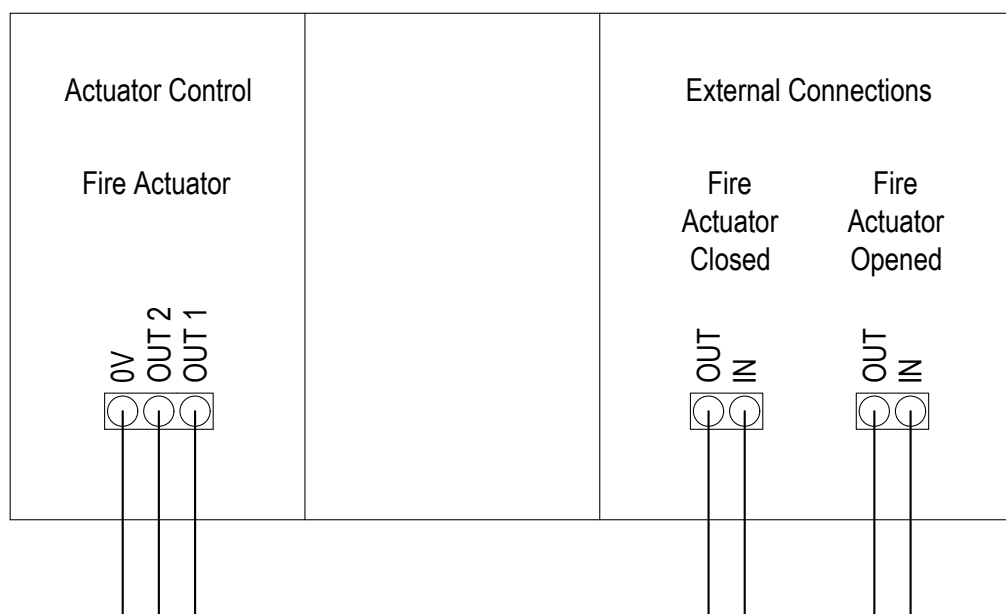
Data	Value
Manufacturer/Type	Belimo/BE24
Voltage	24V AC/DC
Power Consumption	0.3 Amp
Degree of Protection	IP54
Ambient Temperature	-30 to +50°C
Power Consumption in Operation	12W
Power Consumption in Rest	0.5W
Nominal Torque	40Nm
Sound Power Level	62dB
Connection Supply/Control	3 x 0.75mm ²
Connection Auxiliary Switch	6 x 0.75mm ²
Switching Points	3°/87°

Linear Grille

The SND-R linear grille comprises of an extruded frame and fixed aluminium linear blades at 0 degrees. They are polyester coated to RAL 9010 white 20% gloss as standard. Other colours are available on request. The linear grille functions as an air transfer and access door. The grille is framed and hinged and held closed by colour coded screws.



Wiring Details



Technical Data Sheet –

Shaft Natural Damper – Residential (SND-R)

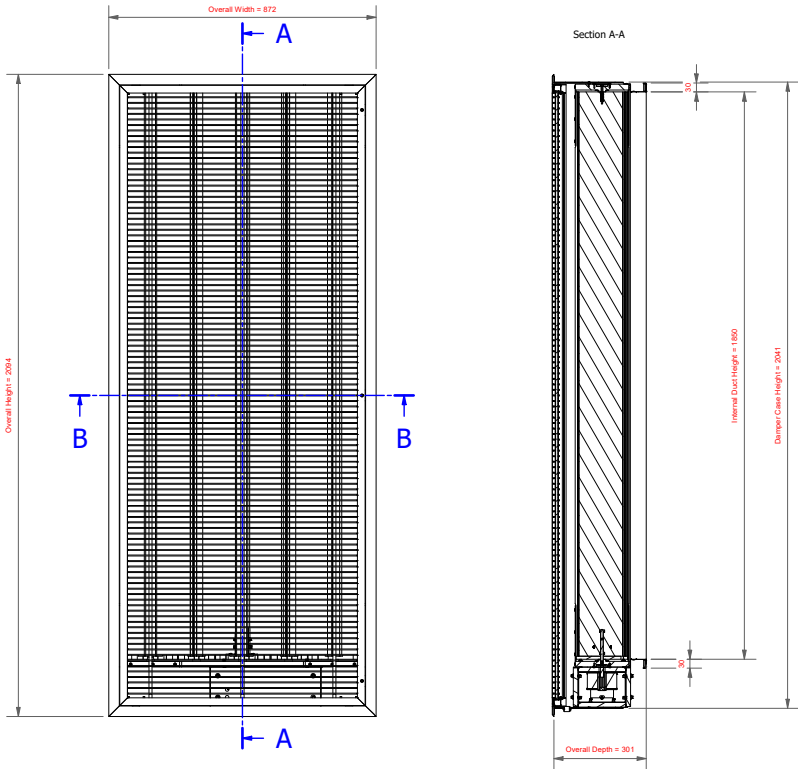
Size Range

Type	Overall Width (mm)	Overall Height (mm)	Geometric Area (m ²)	Free Area* (m ²)	Velocity (m/s)	Pressure Drop (Pa) (incl. grille)
SND-R.75.185	819	2041	1.388	1.03	4	7
					6	15
					8	26
					10	45
SND-R.90.155	969	1741	1.395	1.03	4	7
					6	14
					8	25
					10	44
SND-R.90.185	969	2041	1.665	1.23	4	7
					6	14
					8	25
					10	44

*Area between blades

Drawings

SND-R.75.185

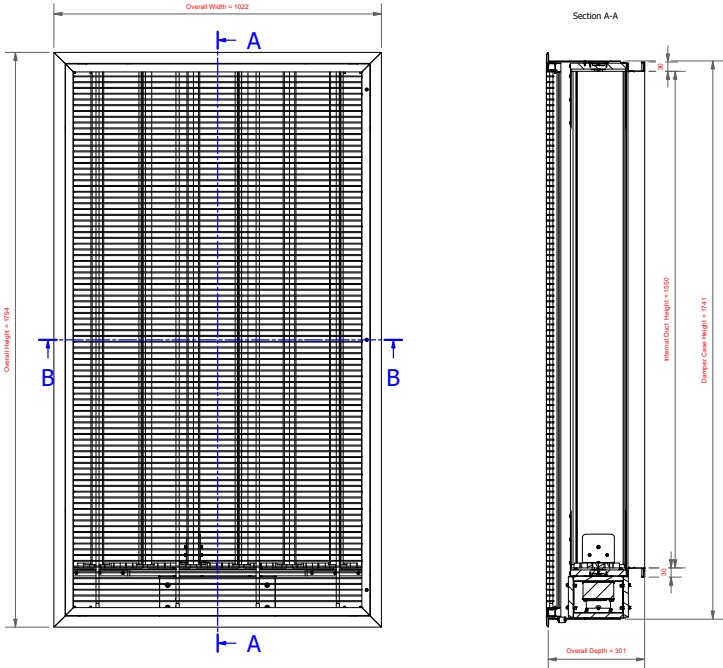


Technical Data Sheet –

Shaft Natural Damper – Residential (SND-R)

Drawings (cont.)

SND-R.90.155



SND-R.90.185

