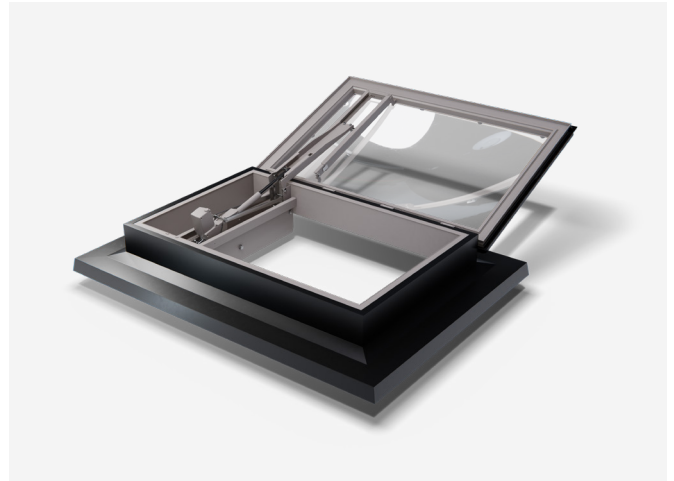


Roof Single Leaf – Residential



Specific Features

- Fully certified to BS EN12101-2
- Compliant with Building Regulations Approved Document B and L
- Opens to 160 degrees within 60 seconds
- May incorporate roof access
- Provides natural comfort ventilation
- EN 1873 Impact Resistance 1200J
- Available as square, rectangular or circular
- May be glazed or solid insulated lid
- Available with PVC upstand or direct to builders upstand

Product Description

Roof Single Leaf – Residential units are principally designed for smoke and heat ventilation in corridors within residential apartments, hotels, shops and offices. They are available as square, rectangular or circular.

They may be glazed in polycarbonate rooflight in single, double, triple or quad skin or with aluminium insulated solid cover. The polycarbonate rooflights are available as clear, opal or heat reflect. The aluminium insulated covers are available as mill finish or powder coated to any RAL colour.

The electric actuator is 24 volt DC and opens the units to 160° within 60 seconds. A wide range of upstands are available to accommodate roof insulation or an adaptor may be installed to builder's upstands. Roof Single Leaf – Residential (RSL-R) may also be used for roof access and to provide natural ventilation.

Roof Single Leaf – Residential

Thermal transmission

Values shown below are calculated U-Values, unless denoted otherwise. Complete unit U-Values are available on request.

Typical Values	U-Value (W/(m ² ·K))
Double Glazed	2.68
Triple Glazed	1.78
Quadruple Glazed	1.37
Solid aluminium insulated cover 32mm	0.80
Solid aluminium insulated cover 64mm	0.48

Performance of glazing materials

Typical Values	Polycarbonate
Fire Ratings	
To BS 476: Part 3	AA
To BS 476: Part 3	Class 1
To 1991 Building Regulations	Tp(a)
Service Temperature	-50°C – +120°C

160° actuator technical data

	LM70100	LM100160
Voltage	24V DC	24V DC
Current (with load)	Max 2.5 amp	Max 4.0 amp
Opening Angle	160°	160°
Ambient Operating Temperature	-15°C to +70°C	-15°C to +70°C
Operating Time	< 60 seconds	< 60 seconds
Protection Degree	min IP54	min IP54
Product Life Comfort Cycles	10,000	10,000
Weight	23kg	25kg
Size	700–1100mm	1000–1600mm

- Polycarbonate rooflights BBA Certificate no. 00/4691
- Manufactured and certified to EN12101-2 Factory Production Control (FPC)
- Weather tightness to EN1873 Pass.
- Impact resistant to EN1873 1200 joules and ACRM Class B
- Resistance to Heat B300 EN12101-2 Annex G
- Snow Load SL500-1000 EN12101-2 Annex D-E
- Wind Load WL500-1500 EN12101-2 Annex F
- Low Ambient Temperature T (-15) EN12101-2 Annex D-E