

SUPER MASTER

CHAIN ACTUATOR

OPENING STROKE SIZES

450 - 600 - 800 - 1000 mm (24V DC only)

PUSH FORCE

400 N (800/1000 mm = 300 N)

VOLTAGE

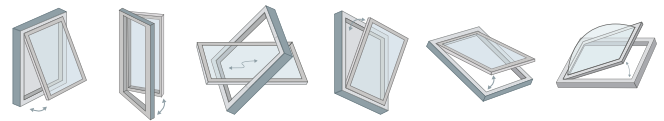
230V AC - 24V DC



DESCRIPTION

Supermaster electric chain actuator with double link chain. Force 400 N. Strokes: 450 mm, 600 mm, 800 mm or 1000 mm. Voltage supply 230 Vac or 24 Vdc. Limit stop by micro switches and thermal protection (230 Vac version) or electronic safety stop (24 Vdc version). Parallel connection. Colours available: Silver Anodised, Dark Brown Anodised or White RAL 9010. Conforms to 2004/108/CE directive, the 230 Vac version also conforms to 2006/95/CE, the 24 Vdc version is tested in accordance with the requirements of the European Standard EN 12101 - 2. Fixing brackets sold separately.

WINDOW TYPES



APPLICATION



COLOURS

- Dark Brown Anodised
- Silver Anodised
- White RAL 9010
- ⊗ Custom RAL colour

CERTIFICATION

Certified and tested in accordance to EN 12101-2



SUPERMASTER
CHAIN ACTUATOR
ELECTRIC

TECHNICAL DATA

	230V AC	24V DC (+/- 10%)
Voltage	230V AC	24V DC (+/- 10%)
Push Force	400 N (300N for 800 or 1000 mm)	400 N (300N for 800 or 1000 mm)
Pull Force	400 N	400 N
Opening Stroke	450, 600 or 800mm	450, 600, 800 or 1000 mm
Opening Speed	23 mm/s	20 mm/s
Current Consumption	0.8 A	2.0 A
Colour	White RAL 9010, Silver Anodised, Dark Brown Anodised or custom RAL colour	White RAL 9010, Silver Anodised, Black Anodised or custom RAL colour
IP Rating	IP 20	IP 20
Life Span	10,000 opening and closing movements	10,000 opening and closing movements
Delivery Includes	1 x Actuator & 1 x Vent Bracket	1 x Actuator & 1 x Vent Bracket
Flex Length	2 m	2 m
Cable Dimensions	3-Core & Earth	2-Core
Min. window width	> 648 mm (450 mm stroke), 800 mm (600 mm stroke) or 1028 mm (800 mm stroke)	> 648 mm (450 mm stroke), 800 mm (600 mm stroke), 1028 mm (800 mm stroke) or 1220 mm (1000 mm stroke)
Max. window width	< 1300 mm (use multiple actuators if wider)	< 1300 mm (use multiple actuators if wider)
Synchronisation	No	No

ACCESSORIES

- SM40460 - Slide Bracket
- SM40472 - Inward Opening Bracket Set
- SM40560 - Pivot Bracket

PART CODES

- SMA450B - SUPERMASTER Actuator 230 V 450 mm Black
- SMA450S - SUPERMASTER Actuator 230 V 450 mm Silver
- SMA450W - SUPERMASTER Actuator 230 V 450 mm White
- SMA600B - SUPERMASTER Actuator 230 V 600 mm Black
- SMA600S - SUPERMASTER Actuator 230 V 600 mm Silver
- SMA600W - SUPERMASTER Actuator 230 V 600 mm White

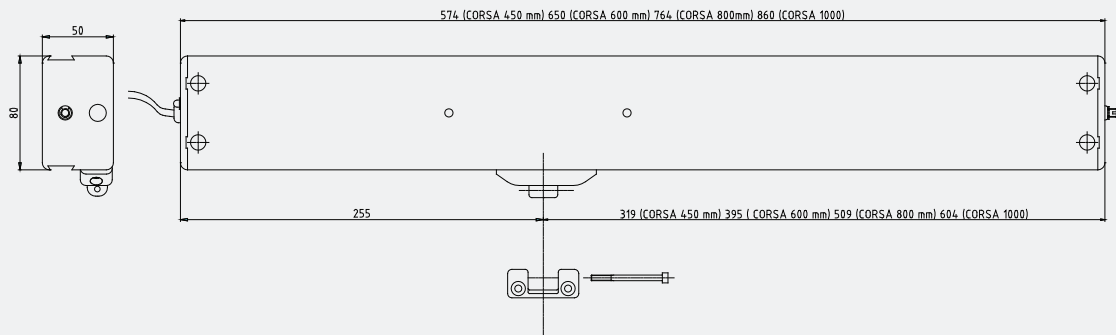
PART CODES (cont)

- SMA800B - SUPERMASTER Actuator 230 V 800 mm Black
- SMA800S - SUPERMASTER Actuator 230 V 800 mm Silver
- SMA800W - SUPERMASTER Actuator 230 V 800 mm White
- SMD1000B - SUPERMASTER Actuator 24 V 1000 mm Black
- SMD1000S - SUPERMASTER Actuator 24 V 1000 mm Silver
- SMD1000W - SUPERMASTER Actuator 24 V 1000 mm White
- SMD450B - SUPERMASTER Actuator 24 V 450 mm Black
- SMD450S - SUPERMASTER Actuator 24 V 450 mm Silver
- SMD450W - SUPERMASTER Actuator 24 V 450 mm White
- SMD600B - SUPERMASTER Actuator 24 V 600 mm Black
- SMD600S - SUPERMASTER Actuator 24 V 600 mm Silver
- SMD600W - SUPERMASTER Actuator 24 V 600 mm White
- SMD800B - SUPERMASTER Actuator 24 V 800 mm Black
- SMD800S - SUPERMASTER Actuator 24 V 800 mm Silver
- SMD800W - SUPERMASTER Actuator 24 V 800 mm White

SUPERMASTER

CHAIN ACTUATOR
ELECTRIC

DIMENSIONS



CONTROLS

230V AC



S50-1
Rocker Switch



RCU1-KIT
Control Unit (Radio)



EVC
Control Unit & Weather Station



RRTKEY
Key Switch

24V DC (+/- 10%)



PSU - 2/4/8
24V DC Transformer



PSU - 2/4/8RC
24V DC Transformer (Radio)



WUC 102
Control Unit

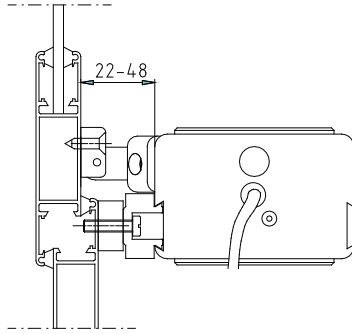


WCC 310
Control Unit

SUPERMASTER
CHAIN ACTUATOR
ELECTRIC

**INSTALLATION
EXAMPLES**

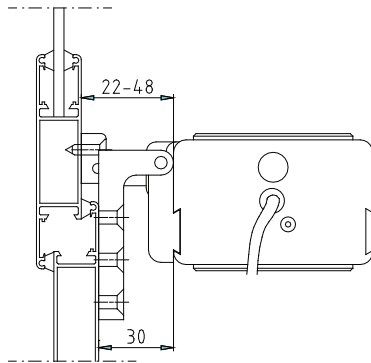
Top-Hung
(Aluminium)



SM40460



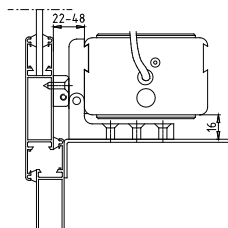
Top Hung
(uPVC)



SM40560



Top Hung
(Timber)



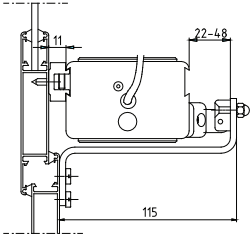
SM40560



SUPERMASTER
CHAIN ACTUATOR
ELECTRIC

**INSTALLATION
EXAMPLES**

Inward opening



SM40472

